

# Claims Divisions & Leadership Contacts



## Our guiding Claims principles

In an era of accelerating risks, you need the assurance of an insurance partner who can calmly and expertly support you through a seamless and efficient claims process.

We are guided by three core principles: **being bold**, relentlessly **striving for better** and **doing the right thing** - ensuring a claims process that works with you and for you.

### Being bold

We employ smart and practical people and empower them to act. We pride ourselves on being customer centric with a genuine desire to partner with our insureds and brokers. You speak to people who know the industry and understand the complexity of your claim, who can make a recommendation and make impactful decisions quickly. This means that you deal with the right person throughout the claims process.

### Striving for better

Our underwriting and claims teams work hand in hand, ensuring that our Claims professionals understand the insureds' and brokers' needs as well as the underwriters' intent. With constant awareness of claims trends and customer feedback, we continue to strive for better, delivering innovative, real world claims solutions.

### Doing the right thing

We strive to be experts, responsive, transparent, accountable, and fair. No matter the scale or complexity of your claim, we ensure an efficient and practical process. We aim to do the right thing by providing both timely coverage decisions and prompt payments. We are proud to live our values in our day-to-day interactions, committed to ensuring the best possible outcome for you, using all the tools at our disposal.

# Beazley Claims' Product-Expertise Led & Client-Inspired Structure

## Our Beazley Claims Professionals

Have a wealth of **industry and regional experience, technical knowledge, and training** to provide claims insights, guidance, and oversight.

## Handle Client-Centric Claims Solutions

- First Party
- Third Party Large Risk & Middle Market
- Small Business, Treaty, & Claims Solutions

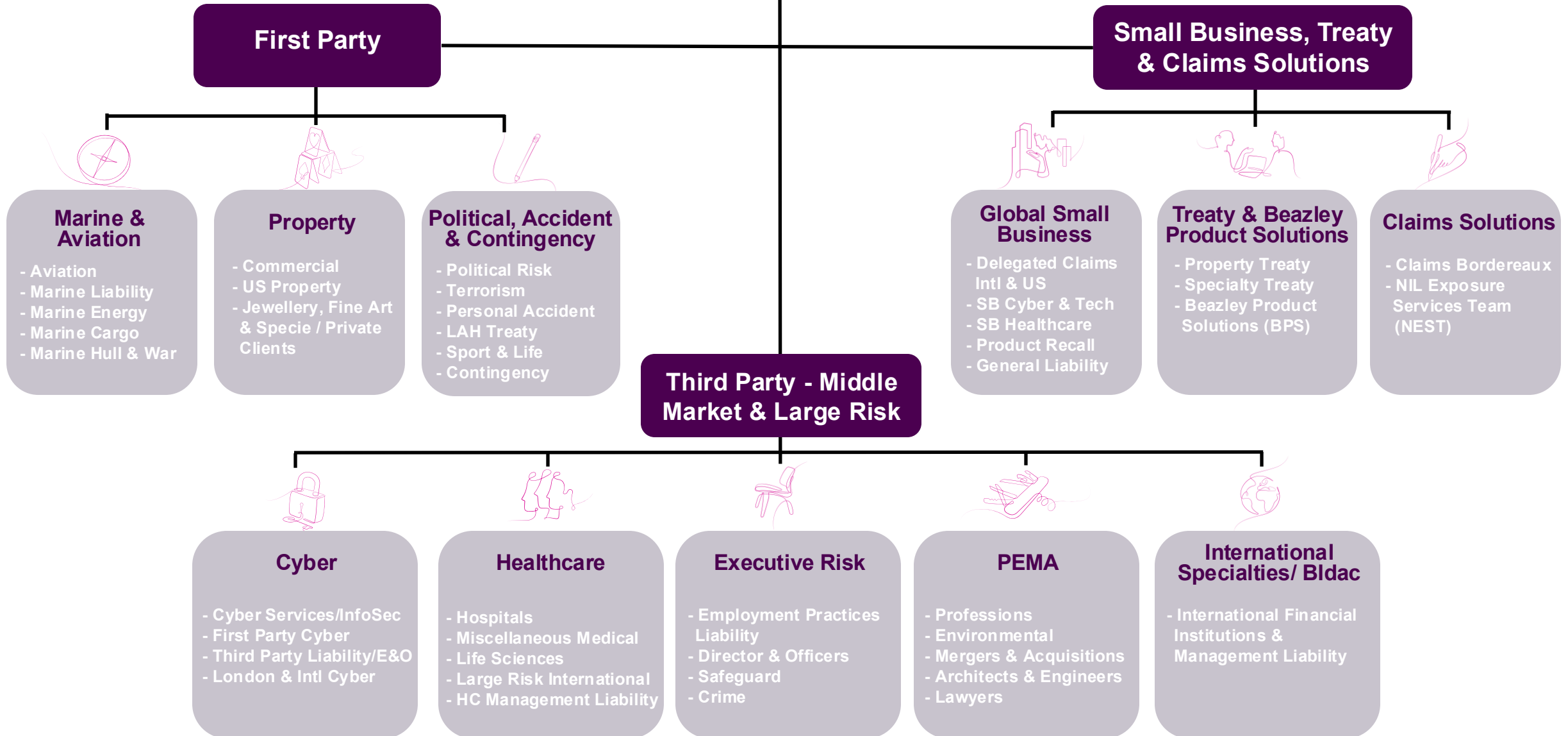
## In the UK & US

We are **organized along product lines** where the right people with the right industry- and business-specific expertise manage each claim.

## In Asia, Europe, Canada & Latin America

We offer expert knowledge and claim-specific skill **across multi-line products.**

# Claims Key Divisions



## Group Claims Leadership



**Eric Ross**

Interim Head of Claims,  
Head of Small Business Claims,  
Treaty and Claims Solutions  
T +1 (770) 351 1708  
eric.ross@beazley.com  
Atlanta



**Elizabeth O'Connell**

Head of First Party Claims  
T +44 (0)20 7674 7530  
elizabeth.oconnell@beazley.com  
London



**Steve Chang**

Head of Third Party Claims –  
Large Risk and Middle Market  
T +1 (212) 801 7183  
steven.chang@beazley.com  
New York



**Zeb Rasool**

Head of Claims Business  
Management  
T +44 (0)20 7674 7531  
zeb.rasool@beazley.com  
London



**Kati Bynon**

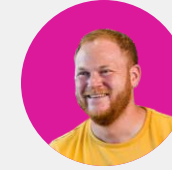
Head of Claims Service  
and Strategy  
T +1 (212) 801 7158  
kati.bynon@beazley.com  
Chicago

## First Party Claims Marine & Aviation



**James Pooley**

Claims Team Leader –  
Marine & Aviation  
T +44 (0)20 7674 7432  
james.pooley@beazley.com  
London



**Chris Bassett**

Claims Focus Group Leader –  
Cargo  
T +44 (0)20 7674 7179  
chris.bassett@beazley.com  
London



**Steve Hill**

Claims Focus Group Leader –  
Marine Energy  
T +44 (0)20 7674 7318  
stephen.hill@beazley.com  
London



**Stuart Mulchinock**

Claims Focus Group Leader –  
Marine Hull & War  
T +44 (0)20 7674 7187  
stuart.mulchinock@beazley.com  
London



**Peter Philpott**

Claims Focus Group Leader –  
Marine Liability  
T +44 (0)20 7674 7050  
peter.philpott@beazley.com  
London



**Adam Vessey**

Claims Focus Group Leader –  
Aviation & Space  
T +44 (0)20 7667 0757  
adam.vessey@beazley.com  
London

## First Party Claims Property



**Trevor Self**

Claims Team Leader –  
Property  
T +44 (0)20 7674 7272  
trevor.self@beazley.com  
London



**Jonathan Brett**

Claims Focus Group Leader –  
Jewellery, Fine Art & Specie  
(JFAS) & Private Clients  
T +44 (0)20 7667 0623  
jonathan.brett@beazley.com  
London



**Joe Buffo**

Claims Focus Group Leader –  
US Property  
T +1 (770) 351 1676  
joe.buffo@beazley.com  
Atlanta



**Mark Crowest**

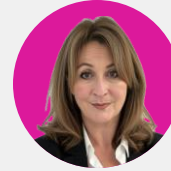
Claims Focus Group Leader –  
Commercial Property  
T +44 (0)20 7674 7777  
mark.crowest@beazley.com  
London



**Andrea Matott**

Claims Product Specialist –  
US Property  
T +1 (617) 239 2634  
andrea.matott@beazley.com  
Boston

## First Party Claims Political, Accident & Contingency (PAC)



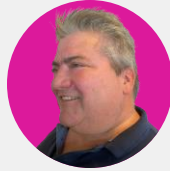
**Rebecca Bailey**

Claims Team Leader –  
Political, Accident & Contingency  
T +44 (0)20 7674 7843  
rebecca.bailey@beazley.com  
London



**Trevor Elford**

Claims Focus Group Leader –  
Personal Accident & LAH Treaty  
T +44 (0)20 7674 7725  
trevor.elford@beazley.com  
London



**Alex Hill**

Claims Focus Group Leader –  
Political and Terrorism  
T +44 (0)20 7674 7326  
alex.hill@beazley.com  
London



**Michelle Nichols**

Claims Focus Group Leader –  
Sports & Life  
T +44 (0)20 7674 7024  
michelle.nichols@beazley.com  
London



**John Wood**

Claims Focus Group Leader –  
Contingency  
T +44 (0)20 7674 7052  
john.wood@beazley.com  
London

## Third Party Claims – Large Risk and Middle Market Cyber & Technology



**Marcello Antonucci**  
Claims Team Leader –  
Cyber & Technology  
T +1 (212) 801 7170

marcello.antonucci@beazley.com  
New York



**Melissa Collins**  
Claims Focus Group Leader –  
Third Party Liability  
Cyber & Technology  
T +1 (212) 801 7172

melissa.collins@beazley.com  
New York



**Katherine Heaton**  
Claims Focus Group Leader –  
Cyber Services &  
InfoSec Claims  
T +1 (303) 927 1559

katherine.heaton@beazley.com  
Denver



**Mark Singer**  
Claims Focus Group Leader –  
Cyber Claims  
T +44 (0)20 7674 7733

mark.singer@beazley.com  
London



**Laura Cella**  
Claims Product Specialist –  
Cyber  
T +1 (215) 446 8412

laura.cella@beazley.com  
Philadelphia



**Sandra Cole**  
Claims Product Specialist –  
Cyber  
T +44 (0)20 7674 7748

sandra.cole@beazley.com  
London



**Matt Grady**  
Claims Product Specialist –  
Cyber  
T +1 (215) 446 8426

matt.grady@beazley.com  
Philadelphia



**Will Ross**  
Claims Product Specialist –  
Cyber  
T +1 (303) 927 1550

will.ross@beazley.com  
Atlanta

## Third Party Claims – Large Risk and Middle Market Healthcare



**Keri Marmorek**  
Claims Team Leader –  
Healthcare  
T +1 (212) 801 7159

keri.marmorek@beazley.com  
New York



**Alison Dobes**  
Claims Focus Group Leader –  
US Healthcare  
T +1 (770) 351 1729

alison.dobes@beazley.com  
Atlanta



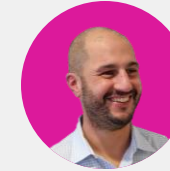
**Rhani Elrahman**  
Claims Focus Group Leader –  
Healthcare Management Liability  
T +1 (312) 476 6218

rhani.elrahman@beazley.com  
Chicago



**Adam Jones**  
Claims Focus Group Leader –  
International Misc Med  
and Life Sciences  
T +44 (0)20 7674 7155

adam.jones@beazley.com  
London



**Adam Moser**  
Claims Product Specialist –  
Healthcare  
T +1 (212) 801 7110

adam.moser@beazley.com  
New York

## Third Party Claims – Large Risk and Middle Market Executive Risk



**William Clarke**

Claims Team Leader –  
Executive Risk  
T +1 (212) 801 7189  
william.clarke@beazley.com  
New York



**Kerri Duffell**

Claims Focus Group Leader –  
Directors & Officers  
T +1 (617) 239 2618  
kerri.duffell@beazley.com  
Boston



**Letoyia Horton**

Claims Focus Group Leader –  
Employment Practices Liability  
T +1 (770) 351 1703  
letoyia.horton@beazley.com  
Atlanta



**Mary Trinh**

Claims Focus Group Leader –  
Safeguard  
T +1 (213) 228 7747  
mary.trinh@beazley.com  
Los Angeles

## Third Party Claims – Large Risk and Middle Market Professions, Environmental, Mergers & Acquisitions (PEMA)



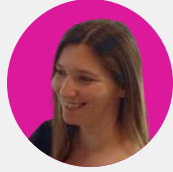
**Larry Griffin**

Claims Team Leader –  
Professions (PEMA)  
T +1 (312) 476 6206  
larry.griffin@beazley.com  
Chicago



**James DeDonato**

Claims Focus Group Leader –  
London Professions  
T +1 (860) 674 3930  
james.dedonato@beazley.com  
West Hartford



**Erica Holzman**

Claims Focus Group Leader –  
US Architects and Engineers  
T +1 (770) 351 1710  
erica.holzman@beazley.com  
Atlanta



**George Mustes**

Claims Focus Group Leader –  
Mergers & Acquisitions  
T +1 (212) 801 7137  
george.mustes@beazley.com  
New York



**David Schechter**

Claims Focus Group Leader –  
Environmental  
T +1 (212) 801 7212  
david.schechter@beazley.com  
New York



**Rochanne Keane**

Claims Product Specialist –  
Architects and Engineers  
T +1 (415) 263 4058  
rochanne.keane@beazley.com  
San Francisco

## Third Party Claims – Large Risk and Middle Market International Specialties/BIdac



**William Clarke**

Interim Claims Team Leader –  
International Specialties/  
Financial lines  
T +1 (212) 801 7189  
william.clarke@beazley.com  
New York



**Eva Villarrubia Guba**

Claims Focus Group Leader –  
Continental Europe,  
Specialty Risks  
T +34 935 249 959  
eva.villarrubia@beazley.com  
Barcelona



**Meike Driess**

Head of BIdac Claims  
T +49 894 520 54905  
meike.driess@beazley.com  
Munich



**Ryan Cleary**

Claims Team Leader –  
Global Small Business  
T +1 (212) 801 7181  
ryan.cleary@beazley.com  
New York



**Samantha Coffin**

Claims Focus Group Leader –  
International Small Business  
and Delegated Claims  
T +44 (0)20 7674 7117  
samantha.coffin@beazley.com  
London



**Andrea McKay**

Claims Focus Group Leader –  
Small Business Cyber &  
Technology Claims  
T +1 (860) 674 4679  
andrea.mckay@beazley.com  
West Hartford



**Misha Nateghi**

Claims Focus Group Leader –  
US Small Business  
and Delegated Claims  
T +44 (0)20 7674 7147  
misha.nateghi@beazley.com  
London

## Small Business Claims, Treaty & Claims Solutions Treaty & Beazley Product Solutions (BPS)



**Heather Everest**

Claims Team Leader –  
Treaty

T +44 (0)20 7674 8035  
heather.everest@beazley.com  
London



**Joe Clayton**

Claims Focus Group Leader –  
Property Treaty

T +44 (0)20 7667 0593  
joe.clayton@beazley.com  
London



**Heidi Darling**

Claims Focus Group Leader –  
Beazley Product Solutions

T +1 (860) 677 3704  
heidi.darling@beazley.com  
West Hartford



**Mark Johnson**

Claims Focus Group Leader –  
Specialty Treaty

T +44 (0)20 7674 7106  
mark.johnson@beazley.com  
London

## Small Business Claims, Treaty & Claims Solutions Claims Solutions



**Ellie Mileham**

Claims Team Leader –  
Claims Solutions

T +44 (0)20 7674 7377  
ellie.mileham@beazley.com  
London

# Contact us (UK / Europe / Asia)

## UK- London

Beazley Group  
22 Bishopsgate  
London  
EC2N 4BQ  
United Kingdom  
T +44 (0)20 7667 0623  
[info@beazley.com](mailto:info@beazley.com)

## Germany

Beazley Solutions International Ltd  
Rosental 4  
80331 Munich  
Germany  
+49 (0)89 4520 54900  
[beazley.germany@beazley.com](mailto:beazley.germany@beazley.com)

## UK- Birmingham

Beazley Group  
Cornerblock, 2 Cornwall Street  
Birmingham  
B3 2DL  
United Kingdom  
Tel: +44 (0)121 393 2950  
[info@beazley.com](mailto:info@beazley.com)

## Spain

Beazley España  
Avenida Diagonal 209-211  
Torre Glories, Planta 28  
08018 Barcelona  
Spain  
T +34 935 249 950  
[beazley.spain@beazley.com](mailto:beazley.spain@beazley.com)

## France

Tour Ariane  
5 Place de la Pyramide  
92800 Puteaux  
France  
T +33 (0)1 7081 5920  
[beazley.france@beazley.com](mailto:beazley.france@beazley.com)

## Asia Pacific

Beazley Pte Limited  
138 Market Street  
#03-04 Capita Green  
Singapore 048946  
T +65 6576 6288  
[singapore.office@beazley.com](mailto:singapore.office@beazley.com)



# Contact us (North America & Canada)

## ATLANTA

Beazley Group  
6 Concourse Parkway NE  
Suite 2800  
Atlanta, GA 30328  
USA  
T +1 (770) 351 1660  
[usainfo@beazley.com](mailto:usainfo@beazley.com)

## LOS ANGELES

Beazley Insurance Services  
633 West Fifth Street  
Suite 0910  
Los Angeles CA 90071  
USA  
T +1 (213) 228 7700  
[usainfo@beazley.com](mailto:usainfo@beazley.com)

## WEST HARTFORD

Beazley Group  
65 Memorial Road  
Suite 320  
West Hartford, CT 06107  
USA  
T +1 (860) 677 3700  
[usainfo@beazley.com](mailto:usainfo@beazley.com)

## BOSTON

Beazley Group  
WeWork  
1 Lincoln Street  
Suite 26 W102  
Boston, MA 02111  
USA  
T +1 (617) 239 2600  
[usainfo@beazley.com](mailto:usainfo@beazley.com)

## MIAMI

Beazley Group  
1221 Brickell Avenue  
Suite 1740  
Miami, FL, 33131  
USA  
T +1 (786) 843 3200  
[usainfo@beazley.com](mailto:usainfo@beazley.com)

## TORONTO

Beazley Canada Limited  
First Canadian Place,  
100 King Street West  
Suite 4530, P.O. Box 328  
Toronto, Ontario M5X 1E1  
Canada  
T +1 (416) 601 2155  
[info.canada@beazley.com](mailto:info.canada@beazley.com)

## CHICAGO

Beazley Group  
333 West Wacker Drive  
Suite 1600  
Chicago, IL 60606  
USA  
T +1 (312) 476 6200  
[usainfo@beazley.com](mailto:usainfo@beazley.com)

## NEW YORK

Beazley Group  
45 Rockefeller Plaza  
16th floor  
New York, NY 10111  
USA  
T +1 (212) 801 7100  
[usainfo@beazley.com](mailto:usainfo@beazley.com)

## VANCOUVER

Beazley Canada Limited  
921-1021 West Hastings Street  
Vancouver, British Columbia  
V6E 0C3  
Canada  
T +1 (778) 373 4432  
[info.canada@beazley.com](mailto:info.canada@beazley.com)

## DALLAS

Beazley Group  
The Colonnade - Tower III  
15305 Dallas Parkway,  
Suite 1060  
Addison, TX , 75001  
USA  
Tel: +1 (972) 419 8000  
[usainfo@beazley.com](mailto:usainfo@beazley.com)

## PHILADELPHIA

Beazley Group  
Two Liberty Place  
50 S. 16th Street, Suite 2700  
Philadelphia, PA 19102  
USA  
T +1 (215) 446 8410  
[usainfo@beazley.com](mailto:usainfo@beazley.com)

## DENVER

Beazley Group  
WeWork - Tabor Center  
1200 17th Street Floor 25  
Denver, CO 80202  
USA  
T +1 (303) 927 1536  
[usainfo@beazley.com](mailto:usainfo@beazley.com)

## SAN FRANCISCO

Beazley Insurance Services  
415 Mission Street  
Suite 37-101  
San Francisco, CA 94105  
USA  
CA Lic. #0G55497  
T +1 (415) 263 4040  
[usainfo@beazley.com](mailto:usainfo@beazley.com)

