

# Preventing email compromise

Risk management best practices from Beazley Breach Response (BBR) Services.

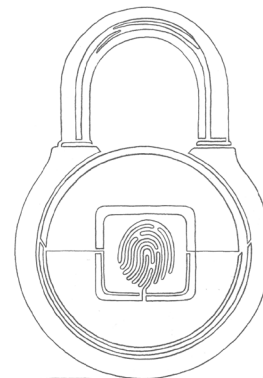
One click on a realistic looking phishing email can expose your entire email environment to attack, resulting in fraudulent wire transfers, redirected payroll deposits and stolen data. Companies facing email compromise must undertake costly investigations involving forensics services and data mining of affected inboxes to see if sensitive information is impacted. Phishing and email compromises present continuous risk for companies.

## Top 5 email controls

- Roll out MFA. Multi-factor authentication means criminals can't get in with just a stolen password.
- Disable legacy protocols. Older email clients and protocols such as Post Office Protocol (POP), Internet Message Access Protocol (IMAP), and Simple Mail Transfer Protocol (SMTP) can't be secured as well as newer versions.
- Clean house. Implement the right email retention policies to avoid overstuffed inboxes.
- Turn on logging. Having the right logs can mean the difference between notifying 10 individuals and 10,000.
- Use domain-based message authentication, reporting & conformance (DMARC), DomainKeys Identified Mail (DKIM), and/or Sender Policy Framework (SPF) email integrity policies.

## BBR Services helps you prevent and respond

Our in-house BBR Services team helps you prevent and respond to phishing and email compromise incidents. Our BBR panel of breach response counsel, forensics experts and data mining and document review specialists work together to efficiently help you identify impacted email inboxes and determine whether you need to notify affected persons.



## BeazleyBreachSolutions.com explains the risks and how to mitigate

- Practical discussion of fundamental prevention and controls related to securing your email system:
  - Hardening Your Office 365 Configuration: Best Practices for Preventing Account Takeovers
  - Business Email Compromise Best Practices
- Beazley Breach Trends alert you to the latest developments and steps to protect your organization
  - Cybercriminals go all in on social engineering
  - Office 365 account takeovers: effective, expensive, and easily preventable
  - Office 365 account takeovers accelerate in Q1
  - New logging for Office 365 can reduce investigation costs
- Cybercrime Spotlight webinars on emerging cyber threats and the most effective preventive controls
  - Business Email Compromise
  - How to Set Up Authentication That Works
  - Monitoring and Logging

## Take advantage of employee training

- Our online learning site provides 10 interactive employee training modules covering topics like phishing, malware, ransomware, and our latest--social engineering prevention.
- A SCORM-compliant information security training module for policyholders with their own LMS. The new 2019 version provides expanded coverage of common scams such as fraudulent instruction, CEO fraud, W-2 phishing, and email account takeover.

## Training and prevention from expert partners



- Lodestone Security works with your organization to harden your email security.
- Lodestone Security offers a unique Email Security Assessment focused on risk mitigation to improve the way insureds secure and manage email systems. These assessments are offered to cyber & tech policyholders for a pre-negotiated fee.

[www.lodestonesecurity.com/info/emailsecurity.pdf](http://www.lodestonesecurity.com/info/emailsecurity.pdf)



- Beazley cyber & tech policyholders eligible for up to a 60% off discount on FireEye's Email Threat Prevention

[www.fireeye.com/offer/beazley](http://www.fireeye.com/offer/beazley)



- Beazley cyber & tech policyholders enjoy a 25% discount on KnowBe4's anti-phishing tools, including simulated phishing campaigns and employee training.

[info.knowbe4.com/beazley-1p](http://info.knowbe4.com/beazley-1p)



The descriptions contained in this communication are for preliminary informational purposes only. The product is available on an admitted basis in some but not all US jurisdictions through Beazley Insurance Company, Inc., and is available on a surplus lines basis through licensed surplus lines brokers underwritten by Beazley syndicates at Lloyd's. The exact coverage afforded by the product described herein is subject to and governed by the terms and conditions of each policy issued. The publication and delivery of the information contained herein are not intended as a solicitation for the purchase of insurance on any US risk. Beazley USA Services, Inc. is licensed and regulated by insurance regulatory authorities in the respective states of the US and transacts business in the State of California as Beazley Insurance Services (License#: 0G55497).

Lodestone is a wholly owned subsidiary of Beazley plc. and does not provide insurance services. Beazley does not share insured-specific information with Lodestone. Information you provide to Lodestone and any engagement findings are shared only between your organization and Lodestone. BZCER017-US 05/19